

# Welcome Students!!

Please find your assigned seat from the diagram below. Assigned seats help me learn your names much more quickly. :)



## Period B3

Mrs. Hansen's desk

# Questionnaire

Please fill out this questionnaire thoughtfully and honestly. This will help me, Mrs. Hansen, get to know you better. :)

# Disclosure & Remind

# Staircase Towers

SM2

Below is a staircase tower that is made by starting with 3 cubes and adding two cubes to get each successive tower.

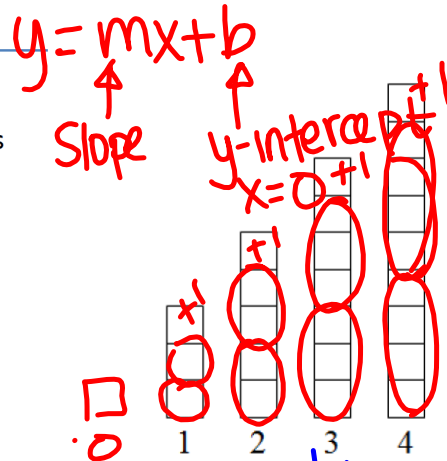
How many cubes will be in the 10<sup>th</sup> tower?

21 cubes

How many cubes will be in the n<sup>th</sup> tower?

$$y = 2x + 1$$

How do you know?



x	y
1	3
2	5
3	7
4	9
...	...
10	21

Green arrows on the right side of the table point from the y-values to the next one, each labeled with a '2', indicating a constant slope of 2.

\*Make a poster of your groups answers and thinking. Link the diagram to your rule or formula to determine the number of cubes in the n<sup>th</sup> tower. Be ready to explain your group's thinking to the class!