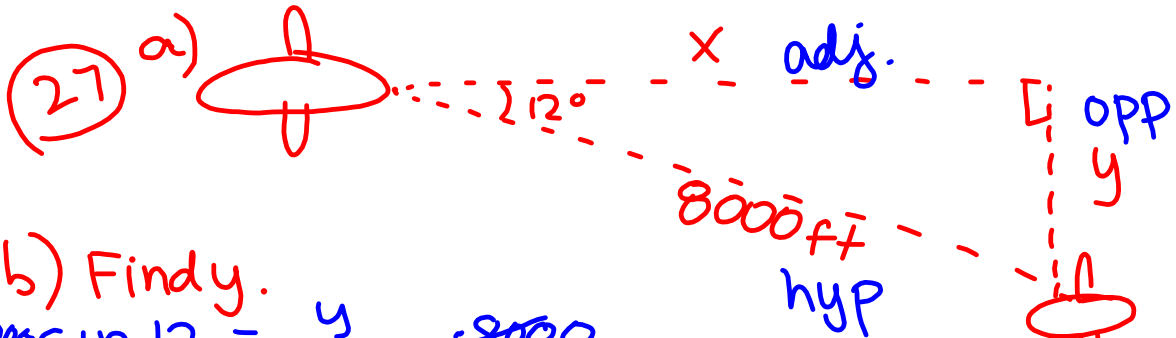


**20 minute review, then we'll
take our Ch 7 & 8 Test!**

④

$$180(6-2) = 180(4) = 720^\circ$$

$$(4) \quad 720 - 166 - 108 - 121 - 135 - 90 = \underline{\underline{100^\circ}}$$



b) Find y.

$$8000 \sin 12 = \frac{y}{8000} \cdot 8000$$

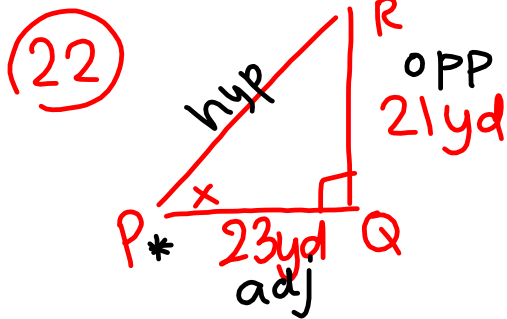
$$8000 \cdot \sin 12 = y$$

$$\boxed{1663.3 \text{ ft} = y}$$

c) $8000 \cos 12 = \frac{x}{8000} \cdot 8000$

$$8000 \cdot \cos 12 = x$$

$$7825.2 = x$$

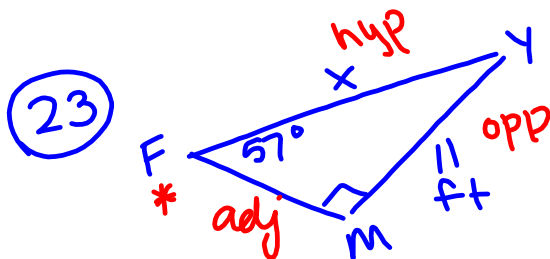


$$\tan x = \frac{21}{23}$$

$$\tan^{-1}(\tan x) = \tan^{-1}\left(\frac{21}{23}\right)$$

$$x = \tan^{-1}\left(\frac{21}{23}\right)$$

$$\boxed{x = 42.4^\circ}$$



$$x \cdot \sin 57 = \frac{11}{x} \cdot x$$

$$\frac{x \cdot \sin 57}{\sin 57} = \frac{11}{\sin 57}$$

$$x = \frac{11}{\sin 57}$$

$$\boxed{x \approx 13.1 \text{ ft}}$$

Chapter 7 & 8 Test