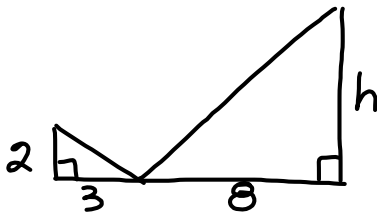


Questions on Lesson 4.6?

We'll be taking our first content mastery quiz of 2nd quarter in a few minutes.



$$3h = 8 \cdot 2$$

$$\frac{3h}{3} = \frac{16}{3}$$

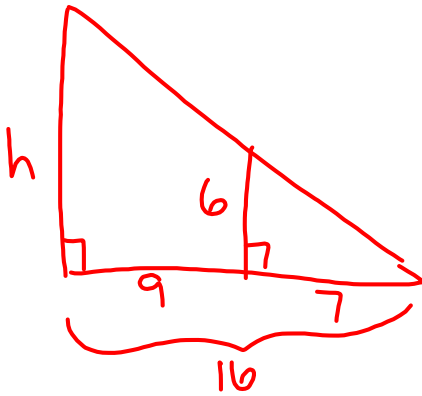
$$h = 5.3\bar{3}$$

$$\frac{2}{3} = \frac{h}{8}$$

~~$$\frac{2}{h} = \frac{3}{8}$$~~

$$\frac{3}{2} = \frac{8}{h}$$

~~$$\frac{h}{2} = \frac{8}{3}$$~~



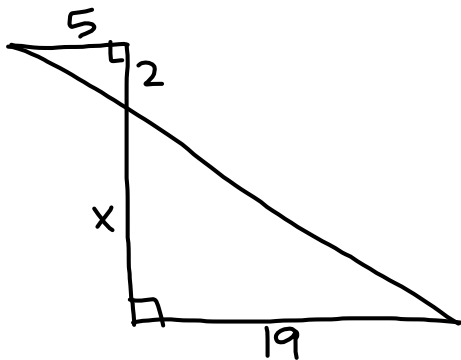
$$\frac{6}{7} = \frac{h}{16}$$

~~$$\frac{6}{h} = \frac{7}{16}$$~~

$$6 \cdot 16 = 7h$$

$$\frac{96}{7} = \frac{7h}{7}$$

$$13.71 = h$$



~~$$\frac{5}{2} = \frac{19}{x}$$~~

~~$$5x = 38$$~~

$$\frac{5x}{5} = \frac{38}{5}$$

$$x = 7.6$$

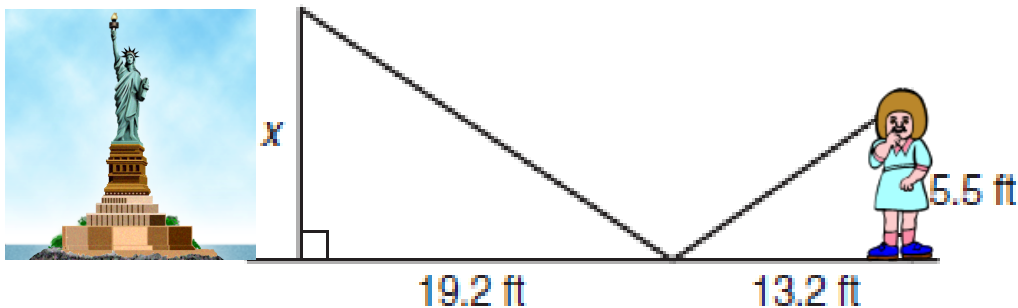
$$\frac{5}{19} = \frac{2}{x}$$

Content Mastery Quiz - Lesson 4.6

Show ALL work to receive full credit

Keisha is visiting a museum. She wants to know the height of one of the sculptures. She places a small mirror on the ground between herself and the sculpture, then she backs up until she can see the top of the sculpture in the mirror.

What is the height of the sculpture?



Homework/Classwork

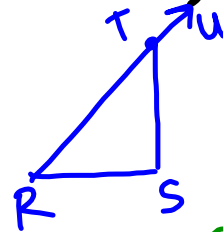
Chapter 3 & 4 Review

-due next class (Friday 11/6)

① $c = \underline{14\sqrt{2}} \approx 19.8$

② $b = 5\sqrt{3}$
 $c = 5 \cdot 2 = 10$

⑩



Interior: $\angle R, \angle S,$
 $\angle RTS$

Exterior: $\angle STU$

Remote Interior:
 $\angle R$ & $\angle S$