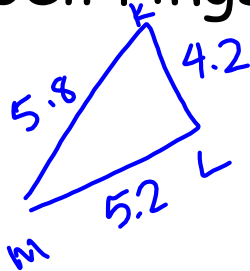


## Questions on your test review?

We'll go over questions for the first five minutes of class, so get your review out and ready before the bell rings!

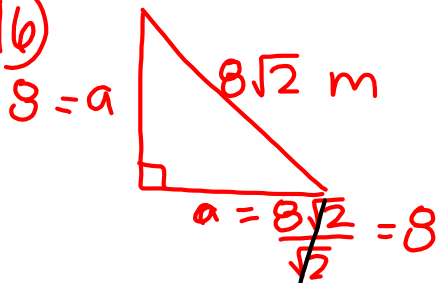
the bell rings!

(13)

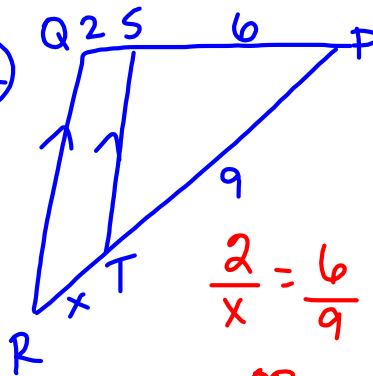


$\angle M, \angle K, \angle L$

(16)



(22)



$$\frac{2}{x} = \frac{6}{9}$$

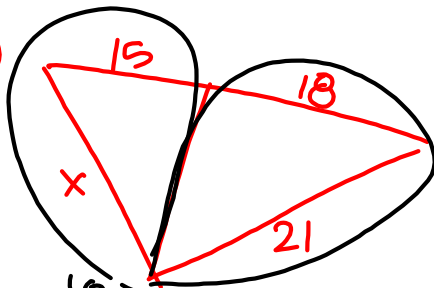
-OR-

~~$$\frac{2}{6} = \frac{x}{9}$$~~

$$\frac{18}{6} = \frac{6x}{6}$$

$$3 = x$$

(21)



$$\frac{15}{x} = \frac{18}{21}$$

$$\frac{18x}{18} = \frac{15 \cdot 21}{18}$$

$$x = 17.5$$

# Chapters 3 & 4 Test