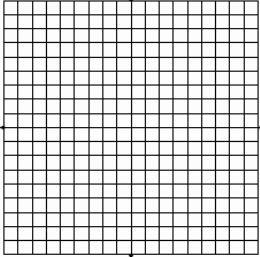
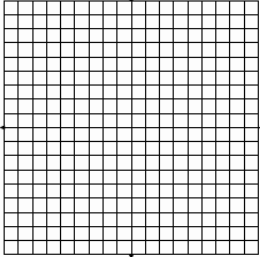
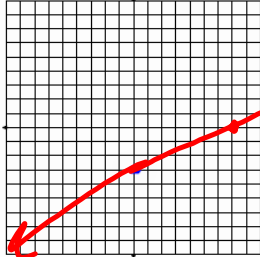
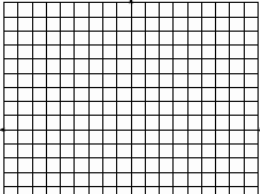
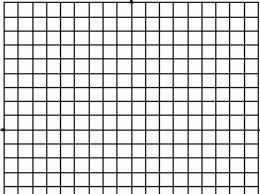
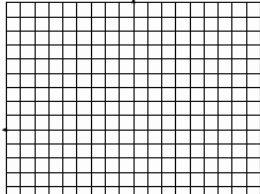


Questions on 2.3 HW? 2.2 HW due today...and
a quiz...

SM2 Module 2 SE.pdf - Adobe Acrobat Reader DC
 File Edit View Window Help
 Home Tools SM2 Module 2 SE.p... x
 19 / 59 125%

Find the x-intercept and the y-intercept. Then graph the equation.

<p>1. $3x + 2y = 12$ a. x-intercept: b. y-intercept:</p> 	<p>2. $8x - 12y = -24$ a. x-intercept: b. y-intercept:</p> 	<p>3. $3x - 7y = 21$ a. x-intercept: $(7, 0)$ b. y-intercept: $(0, -3)$</p> 
<p>4. $5x - 10y = 20$ a. x-intercept: b. y-intercept:</p> 	<p>5. $2y = 6x - 18$ a. x-intercept: b. y-intercept:</p> 	<p>6. $y = -6x + 6$ a. x-intercept: b. y-intercept:</p> 

y-intercept:
 make $x=0$
 and solve for y .

$$3 \cdot 0 - 7y = 21$$

$$-7y = 21$$

$$\frac{-7y}{-7} = \frac{21}{-7}$$

$$y = -3$$

$(0, -3)$

x-intercept:
 make $y=0$
 and solve for x .

$$3x - 7 \cdot 0 = 21$$

$$3x = 21$$

$$\frac{3x}{3} = \frac{21}{3}$$

$$x = 7$$

$(7, 0)$

SM2 Module 2 SE.pdf - Adobe Acrobat Reader DC

File Edit View Window Help

Home Tools SM2 Module 2 SE.p... x

20 / 59 125%

**In problems 12 - 17, (a) Fill in the number that completes the square.
(b) Then write the trinomial as the product of two factors.**

$ax^2 + bx + c$

12. a) $x^2 + 8x + \underline{\hspace{2cm}}$ 13. a) $x^2 + 10x + \underline{\hspace{2cm}}$ 14. a) $x^2 + 16x + \underline{\hspace{2cm}}$
 b) b) b) $(x+8)(x+8) + 64$
 or $(x+8)^2 + 64$

15. a) $x^2 + 6x + \underline{\hspace{2cm}}$ 16. a) $x^2 + 22x + \underline{\hspace{2cm}}$ 17. a) $x^2 + 18x + \underline{\hspace{2cm}}$
 b) b) b)

**In problems 18 - 26, (a) Find the value of "B," that will make a perfect square trinomial.
(b) Then write the trinomial as a product of two factors.**

18. $x^2 + Bx + 16$ 19. $x^2 + Bx + 121$ 20. $x^2 + Bx + 625$
 a) $B = 8$ a) a)
 b) $(x+4)(x+4)$ b) b)
 or $(x+4)^2$

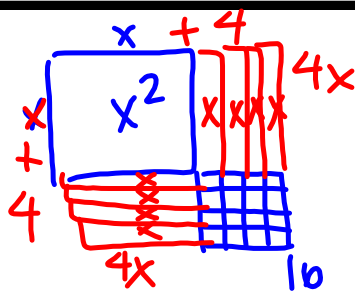
21. $x^2 + Bx + 225$ 22. $x^2 + Bx + 49$ 23. $x^2 + Bx + 169$
 a) a) a)
 b) b) b)

24. $x^2 + Bx + \frac{25}{4}$ 25. $x^2 + Bx + \frac{9}{4}$ 26. $x^2 + Bx + \frac{49}{4}$
 a) a) a)
 b) b) b)

Go



18



$$C = \left(\frac{B}{2}\right)^2$$

$$\sqrt{16} = \sqrt{\left(\frac{B}{2}\right)^2}$$

$$2 \cdot 4 = \frac{B}{2} \cdot 2$$

$$8 = B$$

The customer service representatives at Optima's shop work with customer orders and write up the orders based on the area of the fabric needed for the order. As you can see from problem #2 there are two ways that customers can call in and describe the area of the quilt block. One way describes the length of the sides of the block and the other way describes the areas of each of the four sections of the block.

For each of the following quilt blocks, draw the diagram of the block and write two equivalent equations for the area of the block.

3. Block with side length: $x + 2$.

4. Block with side length: $x + 1$.

5. What patterns do you notice when you relate the diagrams to the two expressions for the area?

6. Optima likes to have her little dog, Clementine, around the shop. One day the dog got a little hungry and started to chew up the orders. When Optima found the orders, one of them was so chewed up that there were only partial expressions for the area remaining. Help Optima by completing each of the following expressions for the area so that they describe a perfect square. Then, write the two equivalent equations for the area of the square.
 - a. $x^2 + 4x$
 - b. $x^2 + 6x$
 - c. $x^2 + 8x$
 - d. $x^2 + 12x$

7. If $x^2 + bx + c$ is a perfect square, what is the relationship between b and c ?
How do you use b to find c , like in problem 6?

Will this strategy work if b is negative? Why or why not?

Will the strategy work if b is an odd number? What happens to c if b is odd?

Module 2 Quiz #2

Titled "Common Formative Assessment"

Do your best, you will get quiz points for participating.

___ 1.

___ 2.

___ 3.

___ 4.

___ 5.

SECONDARY MATHEMATICS II // MODULE 2
STRUCTURES OF EXPRESSIONS

2.4 A SQUARE DEAL

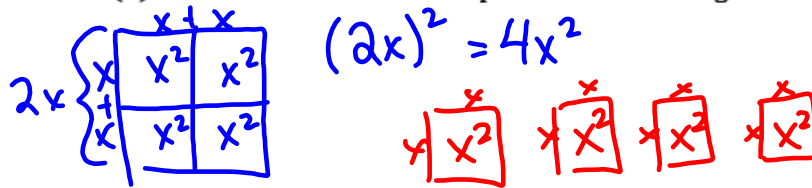
A Solidify Understanding Task



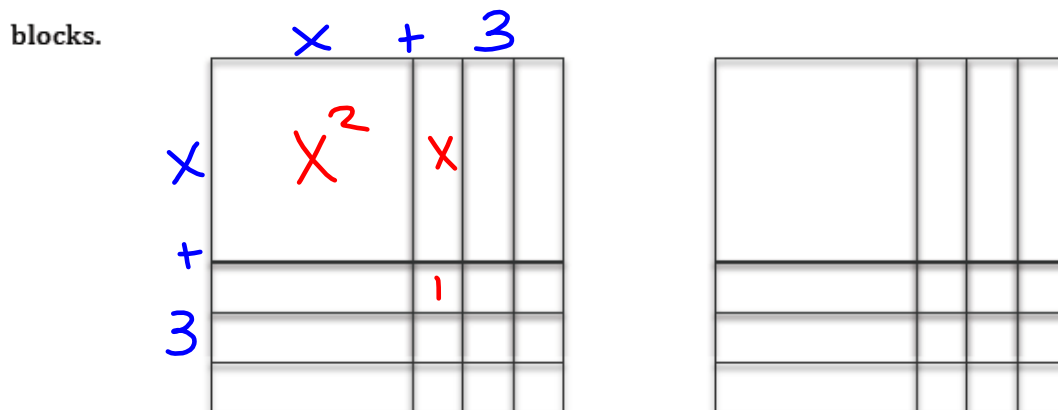
Quadratic Quilts, Revisited

Remember Optima's quilt shop? She bases her designs on quilt squares that can vary in size, so she calls the length of the side for the basic square x , and the area of the basic square is the function $A(x) = x^2$. In this way, she can customize the designs by making bigger squares or smaller squares.

1. Sometimes a customer orders more than one quilt block of a given size. For instance, when a customer orders 4 blocks of the basic size, the customer service representatives write up an order for $A(x) = 4x^2$. Model this area expression with a diagram.



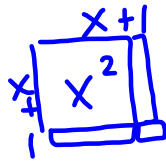
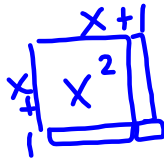
2. One of the customer service representatives finds an envelope that contains the blocks pictured below. Write the order that shows two equivalent equations for the area of the blocks.



$$(x+3)^2 = x^2 + 6x + 9$$

overall: $2(x+3)^2 =$
 $2(x^2 + 6x + 9) =$
 $2x^2 + 12x + 18$

3. What equations for the area could customer service write if they received an order for 2 blocks that are squares and have both dimensions increased by 1 inch in comparison to the basic block? Write the area equations in two equivalent forms. Verify your algebra using a diagram.

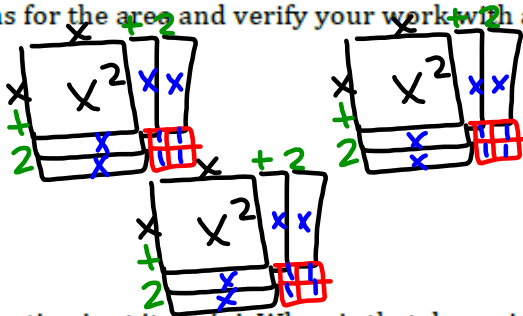


$$2(x+1)^2 =$$

$$2(x^2 + 2x + 1) =$$

$$2x^2 + 4x + 2$$

4. If customer service receives an order for 3 blocks that are each squares with both dimensions increased by 2 inches in comparison to the basic block? Again, show 2 different equations for the area and verify your work with a model.

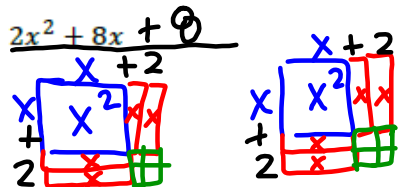


$$3(x+2)^2 =$$

$$3(x^2 + 4x + 4)$$

$$3x^2 + 12x + 12$$

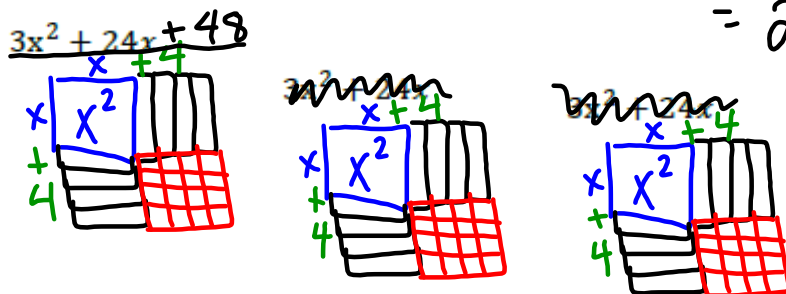
5. Clementine is at it again! When is that dog going to learn not to chew up the orders? (She also chews Optima's shoes, but that's a story for another day.) Here are some of the orders that have been chewed up so they are missing the last term. Help Optima by completing each of the following expressions for the area so that they describe a perfect square. Then, write the two equivalent equations for the area of the square.



$$A = 2(x+2)^2$$

$$= 2(x^2 + 4x + 4)$$

$$= 2x^2 + 8x + 8$$



$$A = 3(x+4)^2$$

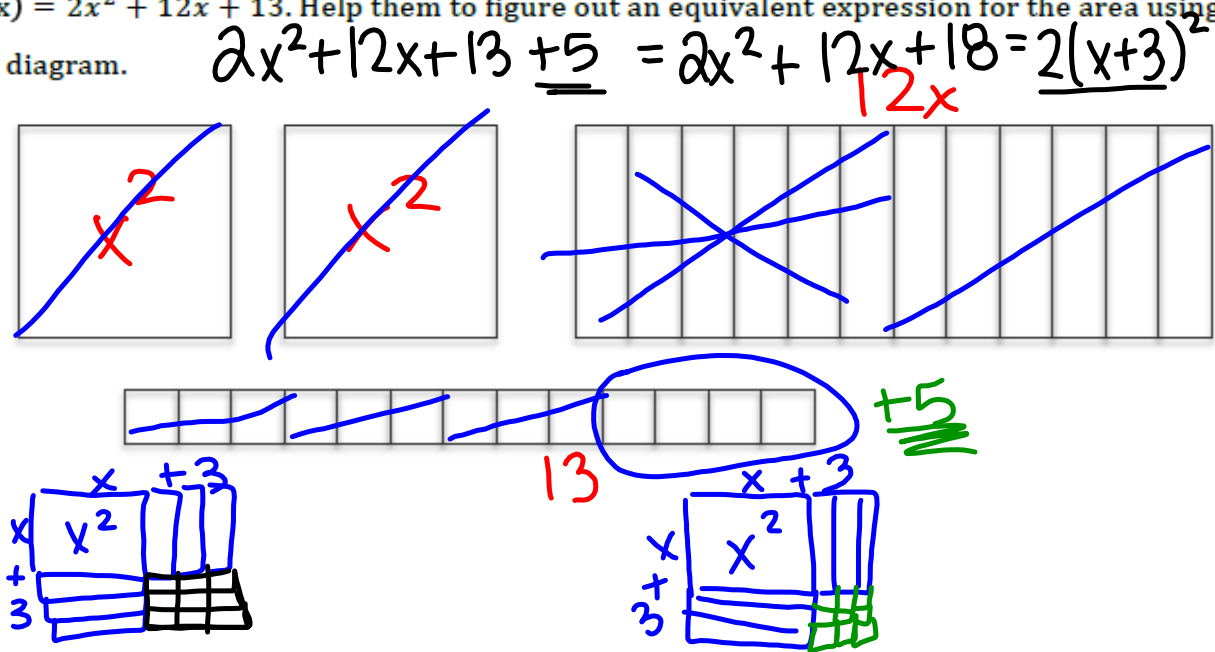
$$3(x^2 + 8x + 16)$$

$$3x^2 + 24x + 48$$

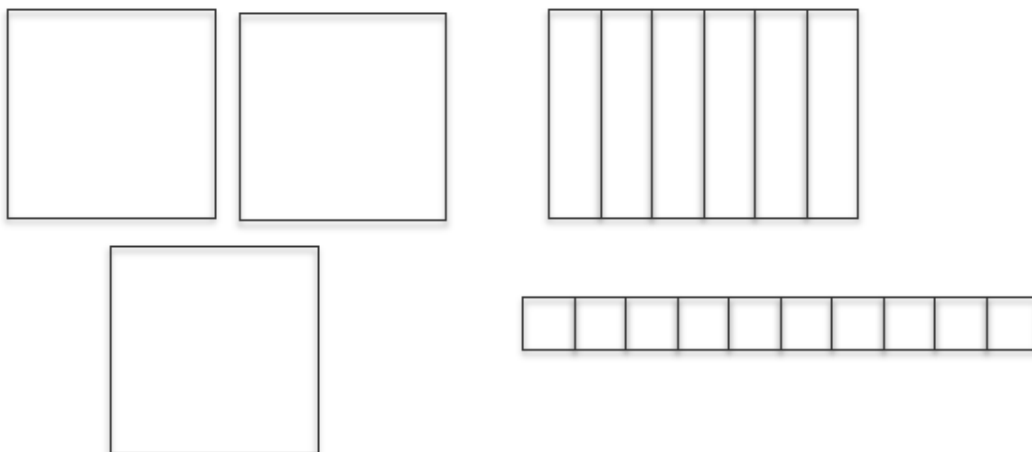
Sometimes the quilt shop gets an order that turns out not to be more or less than a perfect square. Customer service always tries to fill orders with perfect squares, or at least, they start there and then adjust as needed.

6. Now here's a real mess! Customer service received an order for an area

$A(x) = 2x^2 + 12x + 13$. Help them to figure out an equivalent expression for the area using the diagram.



7. Optima really needs to get organized. Here's another scrambled diagram. Write two equivalent equations for the area of this diagram:



8. Optima realizes that not everyone is in need of perfect squares and not all orders are coming in as expressions that are perfect squares. Determine whether or not each expression below is a perfect square. Explain why the expression is or is not a perfect square. If it is not a perfect square, find the perfect square that seems "closest" to the given expression and show how the perfect square can be adjusted to be the given expression.

A. $A(x) = x^2 + 6x + 13$

B. $A(x) = x^2 - 8x + 16$

C. $A(x) = x^2 - 10x - 3$

D. $A(x) = 2x^2 + 8x + 14$

E. $A(x) = 3x^2 - 30x + 75$

F. $A(x) = 2x^2 - 22x + 11$

9. Now let's generalize. Given an expression in the form $ax^2 + bx + c$ ($a \neq 0$), describe a step-by-step process for completing the square.

Homework

Finish 2.4 "Ready, Set, Go"